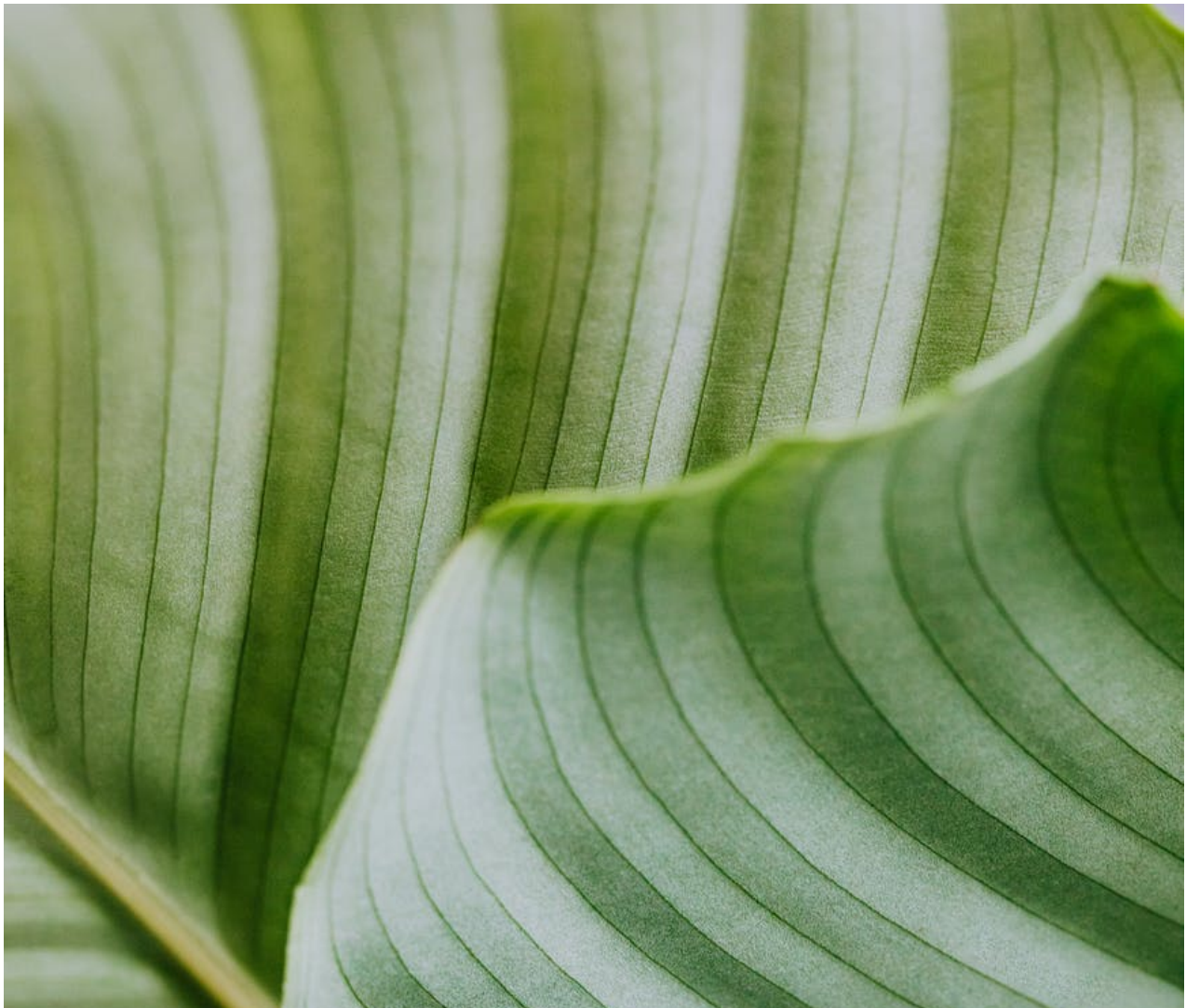




Priya's Learning Centre

Ch – 6 Tissues (Part 2)





Q.1: _____ issue is present in stems, around vascular bundles, in the veins of leaves and in the hard covering of seeds and nuts.

- a) Collenchyma
- b) Aerenchyma
- c) Sclerenchyma

Q.2: The tissues which are made of one type of cells are called _____.

- a) simple permanent tissue
- b) complex permanent tissue
- c) none

Q.3: Which of the following statements is incorrect ?

- a) Xylem and Phloem are complex tissues.

b) Parenchyma, Collenchyma and Sclerenchyma are simple tissues.

c) Phloem is made up of three types of elements.

Q.4: The contraction and relaxation of _____ cells result in movement.

a) blood

b) muscle

c) both

Q.5: _____ forms a barrier to keep different body systems separate.

a) Epithelium

b) Epidermis

c) None

Q.6: _____ epithelial cells are extremely thin and flat and form a delicate lining.

a) simple squamous

b) cuboidal

c) columnar

Q.7: Which cells form the lining of kidney tubules and ducts of salivary glands ?

a) simple squamous

b) cuboidal

c) columnar

Q.8: _____ are hair-like projections on the outer surfaces of epithelial cells.

a) cilia

b) fibre

c) matrix

Q.9: Sometimes when a portion of epithelial tissue folds inward, and a multicellular gland known as _____ is formed.

a) cuboidal epithelium

b) glandular epithelium

c) columnar epithelium

Q.10: The cells of _____ tissue are loosely spaced and embedded in an intercellular matrix.

a) meristematic

b) connective

c) none

Q.11: _____ cells are embedded in a hard matrix that is composed of calcium and phosphorous compounds.

a) muscle

b) blood

c) bone

Q.12: Two bones are connected together by a connective tissue called _____.

a) tendons

b) ligaments

c) cartilages

Q.13: _____ tissue fills the space inside the organs, supports internal organs and helps in repair of tissues.

- a) Areolar
- b) Adipose
- c) Compact

Q.14: The cells of _____ tissue are filled with fat globules.

- a) Areolar
- b) Adipose
- c) Compact

Q.15: The _____ contains proteins, hormones and salts.

- a) Bone
- b) Plasma
- c) Cartilage

Answers:

1. c
2. a
3. c
4. b
5. a
6. a
7. b
8. a
9. b
10. b
11. c
12. b
13. a
14. b

15. b

Share this:

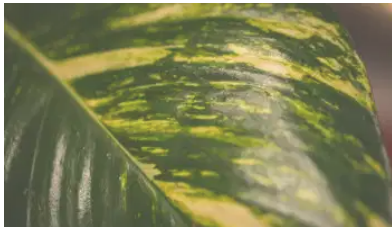
[Customize buttons](#)

Reblog

Liked



You and 41 other bloggers like this.

Related[Ch - 6 Tissues \(Part 1\)](#)

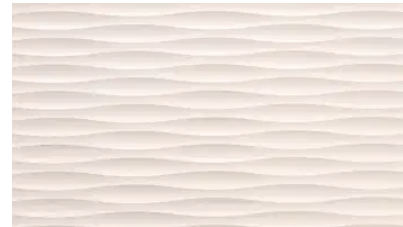
December 31, 2020

In "Basic Science"

[Ch - 13 Why Do We Fall Ill ?](#)

December 19, 2020

In "cbse"

[Structural Organization In Animals](#)

February 11, 2021

In "Basic Science"

[Priya Prakash](#) **[January 2, 2021](#)**
[Basic Science](#), [cbse](#), [general knowledge](#), [Grade 9](#), [ncert](#), [neet](#), [science](#)
[biology](#), [biology mcqs](#), [biology notes](#), [cbse mcqs](#), [cbse notes](#), [cbse syllabus](#), [cbse worksheets](#), [Grade 9](#), [ncert](#), [ncert mcqs](#), [ncert science](#), [NCERT SOLUTIONS](#), [neet](#), [neet biology](#), [neet entrance](#), [neet material](#), [science mcqs](#), [science notes](#), [tissues](#), [types of tissues](#)
[Edit](#)

Published by Priya Prakash

In the midst of winter, i found there was within me an invincible summer ~
Albert Camus [View more posts](#)